



Coronavirus 19 (C19) Specific Risk Management Procedures

Wildhorse Youth Soccer Association will focus on participant health and safety. All return-to-play steps are strictly voluntary, and individuals may choose not to participate in play. All participants are expected to follow local, state, and federal health orders. If authoritative directives from local or state government change, all events may be curtailed, cancelled, or re-scheduled.

Plan Implementation – This plan will be approved by the WYSA Board of Directors, the Clark Fork Soccer League (CFSL), the Wildhorse Sports Association (WSA), and the Sanders County Department of Health (SCDH). Copies of this plan will be provided to Thompson Falls Soccer, St. Regis Soccer, Superior Soccer, Build Bridges School, and other out of town teams who will visit the complex.

Club Contacts

- Risk Manager – Dave Wrobleski – 406-203-8947
- Club President – Nick Lawyer – 406-274-3628
- Club Secretary – Melody Taylor – 425-422-5380
- Thompson Falls Soccer Contact – Eric Nygaard – 406-369-5440
- St. Regis Soccer Contact – Jessica Lewis – 208-651-4081
- Building Bridges Soccer Contact – Josh Allday – 512-635-0984

Prevention

- Ill individuals shall not be allowed to attend any WYSA sanctioned activity and will be asked to leave the premises of such activities.
 - All players and parents/guardians of players will be informed of this requirement at the beginning of the season and intermittently throughout the season.
 - Any player who appears to have a contagious illness will be asked to leave premise and encouraged seek healthcare.
 - At the start of every WYSA activity the lead volunteer (usually the head coach) will ask all players if they feel well and remind them not to participate if feeling ill.
 - Coaches are expected to send home any ill player.
- Hand sanitizer will be provided to coaches and can be used before, during, and after events.
- Players are expected not to share personal items (i.e. water bottles).
- Team snacks are not allowed
- Mask wearing
 - WYSA will not require or expect face coverings of participants, coaches, volunteers, or referees beyond the requirements of the Governor's order. This plan further makes them unnecessary because of the efforts to enact community distancing.
 - All participants, coaches, volunteers, and referees are allowed to wear face coverings as they choose.
 - WYSA recognizes that at MHSA events face coverings are governed by MHSA rules.



- Goalkeeper wear will be player specific and will not be shared.
- Pursuant to the Field Use policy from WSA (which is derived from the Governor's and SCPH directives), no fans/spectators beyond family are allowed to attend any event. If allowed by WSA, non-family fans would be welcomed.
- For Montana High School Association events, WYSA teams shall follow the MHSA Returning to Participation – Fall Activities – Tiers plan provided by MHSA (see below).

Contact Tracing

- Club – WYSA will generate a list of all program participants with contact information to facilitate contact tracing as needed. A copy will be provided to the WSA on 9/1/20 and this list will be immediately available to all relevant parties (specifically the SCDH) upon request. Because new participants will not join after 8/31/20 this document will not be updated once the season begins.
- Clark Fork Soccer League – WYSA will maintain list of participants for U6-U13 level games for teams from Superior, St. Regis, Hot Springs, Plains, and Thompson Falls. This list will immediately be available upon request.
- Montana Christian Athletic Association (MCAA) and Montana Highschool Sports Association (MHSA) Teams – WYSA will request contact information for the head coach and athletic director for all teams who travel to WYSA facilities and will request that these contacts be able to immediately provide a list of attendees to any event upon request. WYSA will provide email each team a full participant list at the start of the season.

Social Distancing

- Fields and markings will help reduce community mixing and encourage social distancing by keeping each town on separate sides of the field (see Community Distancing Plan below).
- Fans and teams shall not intermingle. Teams will setup on opposite sides of the field and shall not intermingle except on the field of play during competition.

Phase specific plans

- Phase 0 - All activities will be suspended.
- Phase 1
 - Practices – can occur in groups less than 10 people. Teams of larger than 10 will be split into 2 groups practicing near each other, but separately.
 - Games – can occur at the U6-U13 levels, U18 level games will be suspended. Spectators will be limited to parents/guardians of players only.
 - Tournaments – cannot occur and will be suspended
- Phase 2
 - Practices – can occur, but inter-team (team A vs team B) scrimmages are not allowed
 - Games – can occur at all levels utilizing community distancing (see below). Family spectators are allowed, non-family spectators and general fans are not allowed.



- Tournaments – can occur utilizing community distancing (see below)
- Phase 3 – all activities can proceed without restriction

Game changes

- Pregame conferences will be limited to the Center Referee, the head coach from each team, and a single captain from each team. This conference will be held at the center-mark. All participants will maintain 6'-distancing during the pregame conference.
- No handshakes will occur.
- Team benches at U12-U18 will be 12-feet back from the edge of the field to allow the Assistant Referee room to function and socially distance.

Management of a C19 an Incident

- First-degree contact event (lab confirmed case of C19) of a program participant, WYSA will:
 - Notify the entire team, coaches, referees, and opposing teams who had contact with the individual within the previous 5 days.
 - Suspend that team's activities for the next 5 days.
 - Confirm that the individual's family will not participate until they have completed self-isolation requirements.
 - Contact the Public Health Department for additional guidance
- Second-degree contact event (participant has contact with a case of C19, but has not tested positive):
 - Remove that individual from participation until they have completed self-isolation requirements.

Pre-participation Physical Exams – To reduce the strain on health care professionals during the C19 pandemic, for the Fall 2020 season pre-participation physical exams shall not be required of any returning participant. Any first-time participant must have a physical exam completed.

Implementation

- All WYSA participants will be sent a disclaimer outlining the above plan.
- All visiting communities will be sent a copy of the above plan.
- Signage shall be displayed at the entrances to our facilities.



MHSA Returning to Participation – Fall Activities – Tiers

MHSA Returning to Participation – Fall Activities – Tiers

	Practices*	Regular Season*	Post Season*
<u>Tier 1</u>	Start as scheduled	Games played as scheduled No multi-team events (triangulars, invitational tournaments, etc. with XC and Golf exceptions Masks per Governor's directive	Dates/Sites – Same Possible playoff post season format / possible separation of sites
<u>Tier 2</u>	Delayed start or interruption	Non-conference games cancelled classification by sport input No multi-team events (triangulars, invitational tournaments, etc.) Masks per Governor's directive	Dates/Sites – Same Possible playoff post season format / possible separation of sites
<u>Tier 3</u>	Delayed start or interruption longer period of time	Non-conference games cancelled Conference season shortened input from classification by sport No multi-team events (triangulars invitational tournaments, etc.) Masks per Governor's directive	Dates/Sites – Same Possible playoff post season format / possible separation of sites
<u>Tier 4</u>	Start however mid-season interruption	Conference season shortened seeding by conference No multi-team events (triangulars invitational tournaments, etc.) Masks per Governor's directive	Post season tournament adjusted dates, formats and possible sites depending on location of virus breakouts - same dates if possible
<u>Tier 5</u>	Long interruption	Some Games /Round Robin Play seed by previous year/ district or div criteria – or other? Masks per Governor's directive	Post season tournament adjusted dates, formats and possible sites depending on location of virus breakouts Post season – playoff only or round robin, etc.

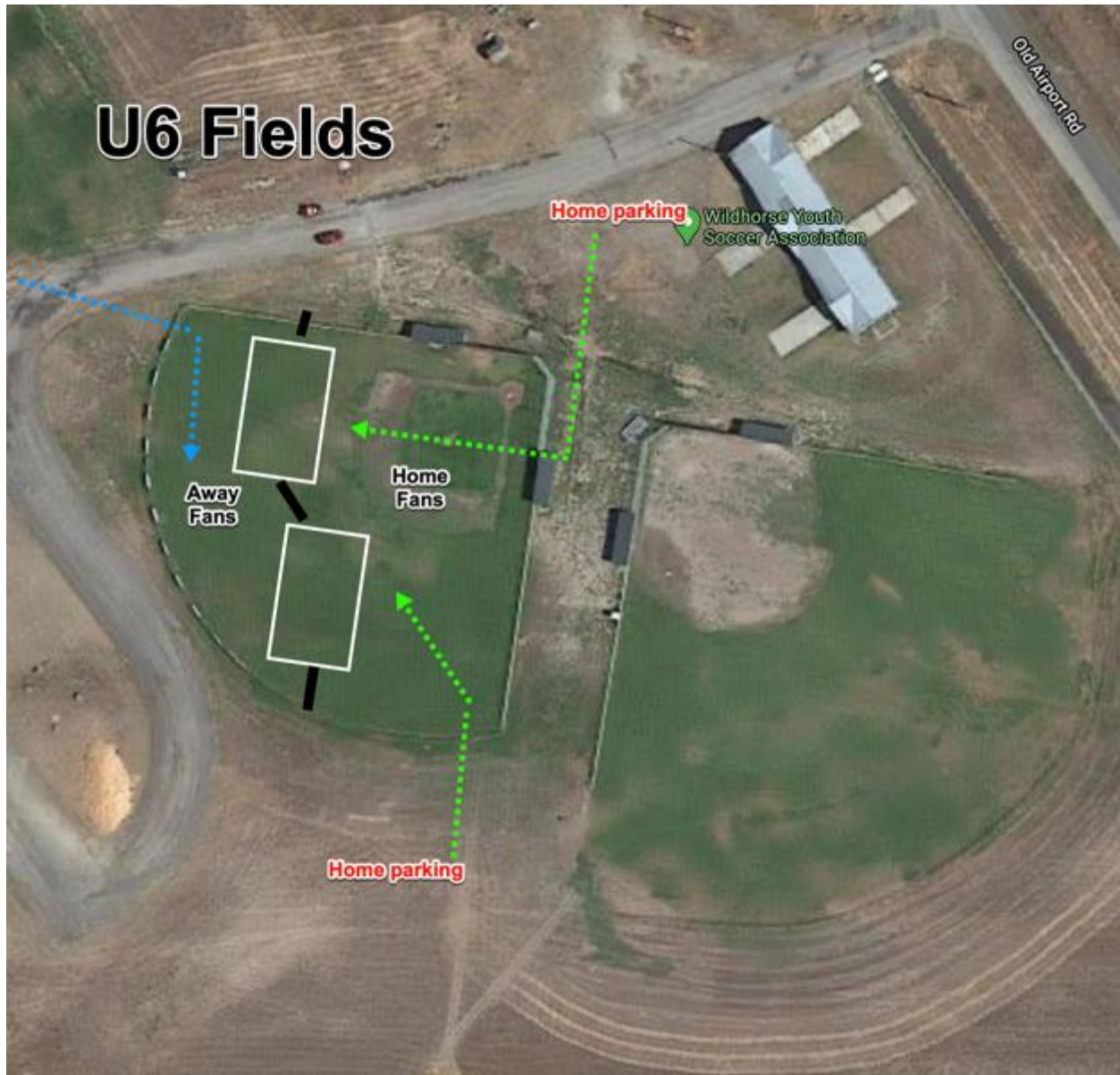
Community Distancing Plan

- Parking – home fans will use the traditional sports complex entrance. Away fans will use the north complex entrance. Signage will be posted directing home and away fans to their parking areas. Historically used parking areas not in use this season will be fenced off. Walking paths to fields will be marked.



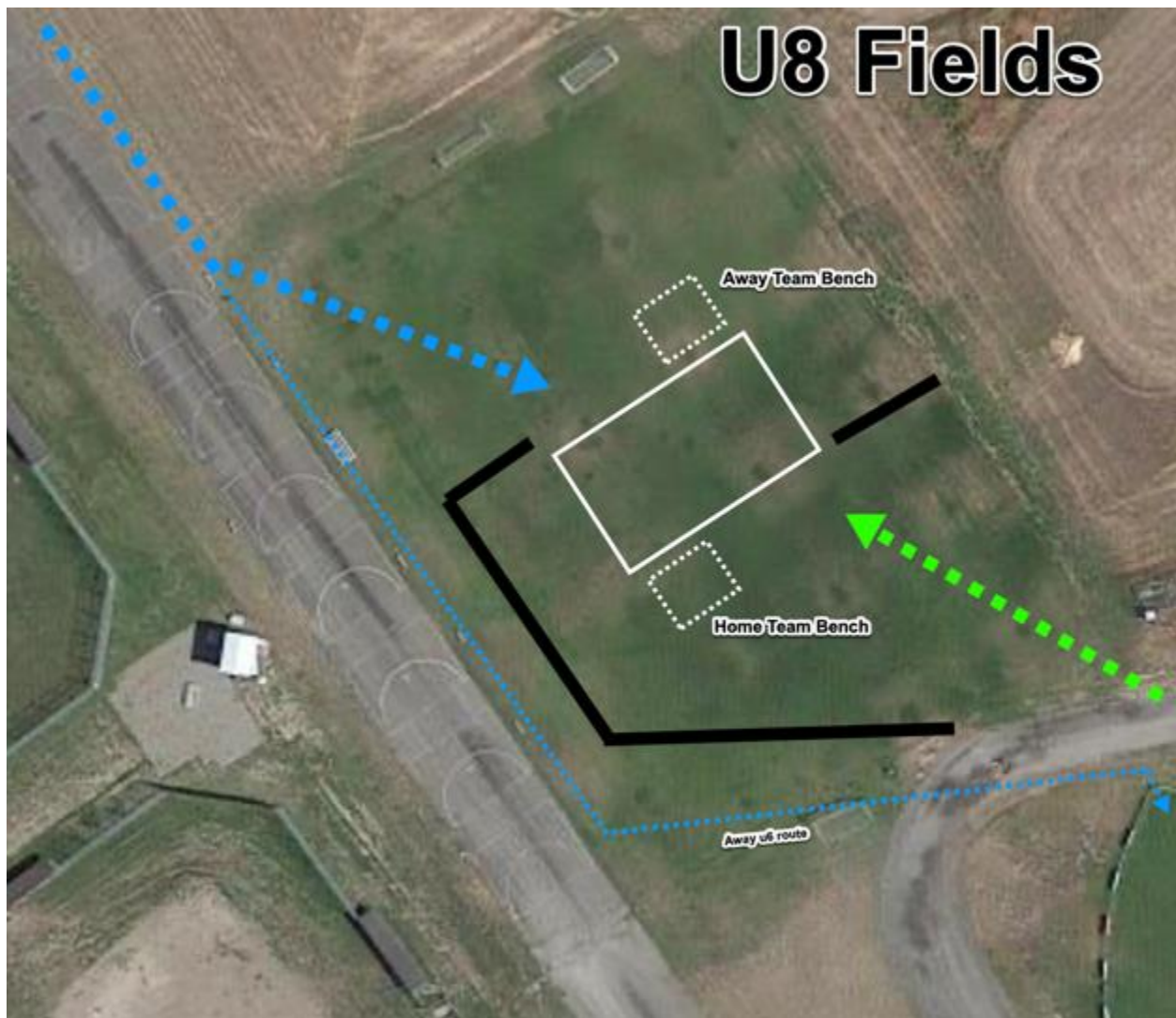
- Field Setup – home and away fans and teams will be setup to prevent community mixing.
 - Barriers (black lines) will separate home and away communities. We will use traffic pylons and rope for these barriers.
 - Separate entrances by home (green) and away (blue) communities will be used. WYSA will not monitor entrances or police crowd flow, but may make changes to crowd control barriers between game days as needed.

- At U6 level, no specific bench area will be defined due to the inherent developmental needs of players (and their connection with parents).



U6 specific notes

- Two fields are needed for this season



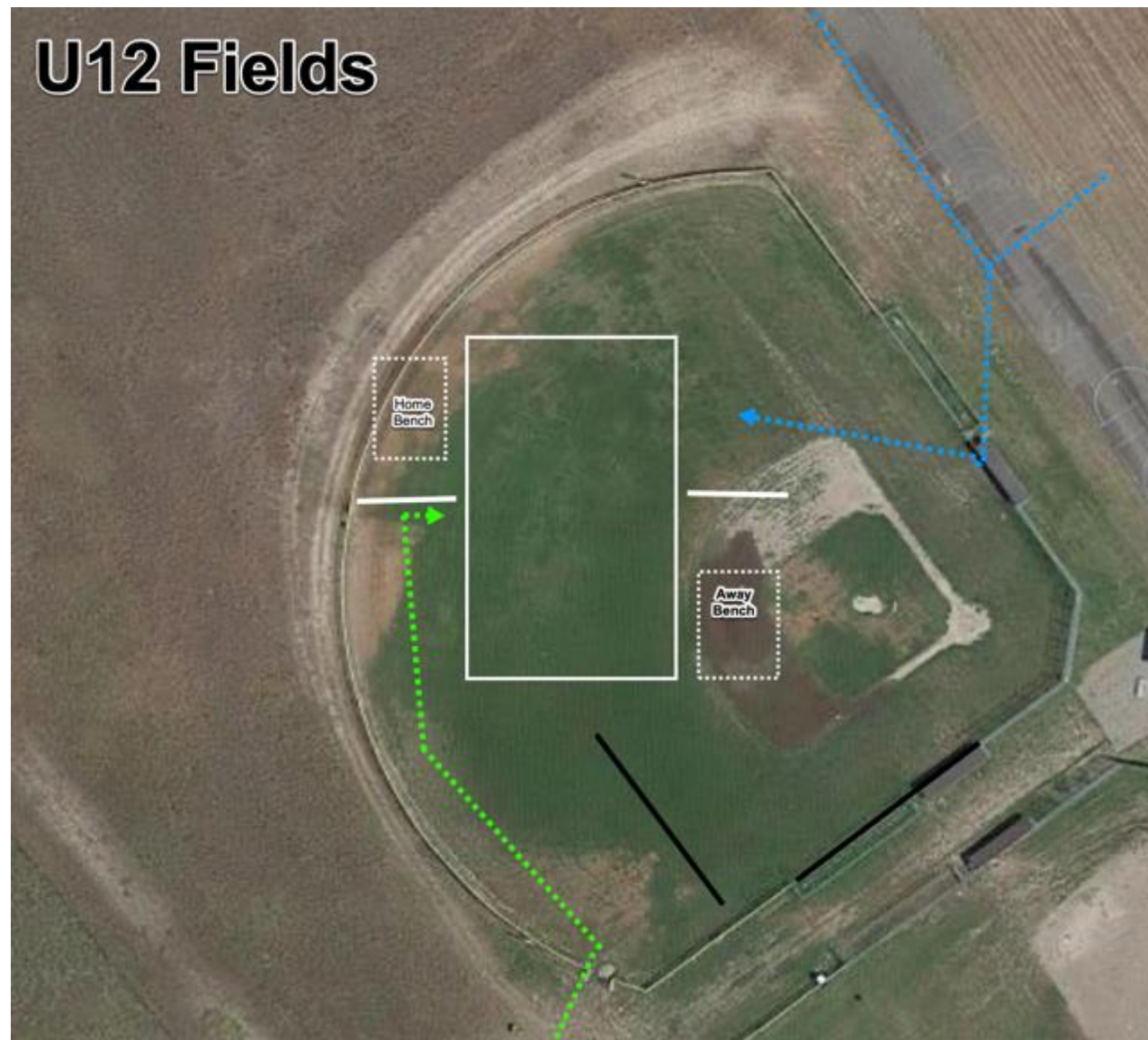
U8 Specific Notes

- Currently we only have capacity for 1 field
- Difficult to keep U6 Away teams clear of U8 home bench, barriers will be used as best as possible.



U10 Specific Notes

- North entrance (to U12 field will be closed)



U12 Specific Notes

- South entrance (to U10 fields) will be closed
- Field may need to be narrower than usual to accommodate room for home bench 6' distance from AR running space on home side.
- ARs will operate on the same side of the field as the home and away benches
- Away Bench will unfortunately be in dirt infield



U15/U18 Specific Notes

- Only one field E-W will be erected in order to manage spectators. A two-field model would not allow community distancing in an appropriate manner.
- During practices, two fields can be erected in a N-S direction.